



cuttable files

© 2011 INSPIRE GRAPHICS

**PLEASE READ BEFORE PROCEEDING:**

Thank you for your purchase. These files were designed and intended for use with software for personal die-cut machines.

Formats included with this set: **.AI (v.8), .DXF, .EPS (v.8), .GSD, .PDF (v.1.5), .SVG**

To learn which file works best with your software, please visit  
[www.letteringdelights.com/cutitfilecomparison.php](http://www.letteringdelights.com/cutitfilecomparison.php)

For information on these file formats and how to use them with your software, please visit  
[www.thecutsource.com](http://www.thecutsource.com)

## About Our Files and this PDF

### Import Size

Our files are created in Adobe Illustrator at 72 DPI. Depending on your software/machine, you may have to adjust your import settings for your file to import at the intended size.

### Standard Sizing

Not all personal die cutters are created equal. Though our standard file size is 4" at 72 DPI, we do not guarantee that every machine will be capable of cutting it. In rare cases, it may be necessary to size the file larger.

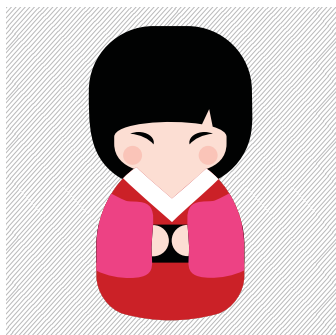
### Grey Boxes

Because some of our images employ the color white, it may be difficult to view them printed and in certain applications. To help enable better viewing, images are illustrated on top of a striped, grey box. This box is for illustrative purposes only and is not included in the actual file.

### DXF

Our DXF files are scaled in the millimeter (1 mm : 1 unit). When importing, be sure to adjust your settings appropriately. If nothing appears when opened, please be sure to check outside the canvas bounds as some programs misinterpret the origin.

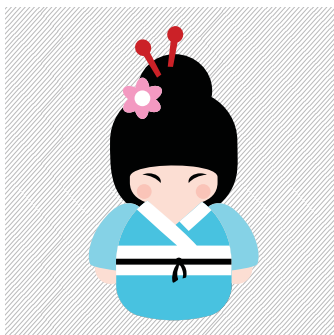
**For further education on personal die cutters, file formats, and tutorials, visit:**  
**[www.thecutsource.com](http://www.thecutsource.com)**



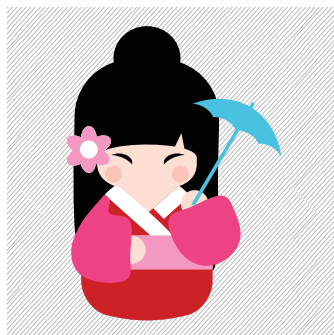
kyoto\_kuties-01



kyoto\_kuties-02



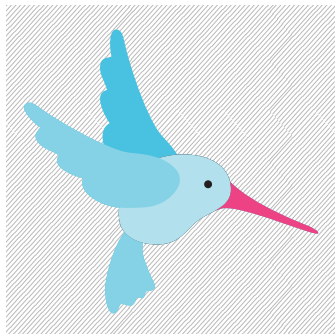
kyoto\_kuties-03



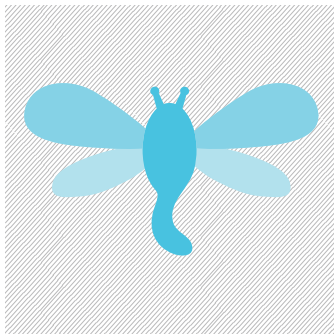
kyoto\_kuties-04



kyoto\_kuties-05



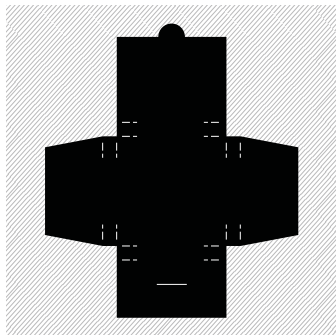
kyoto\_kuties-06



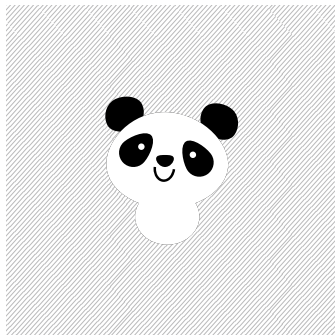
kyoto\_kuties-07



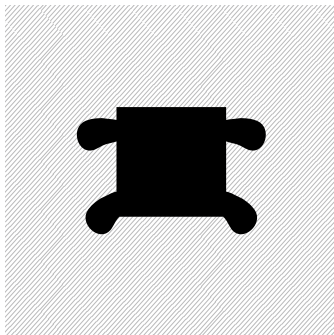
kyoto\_kuties-08



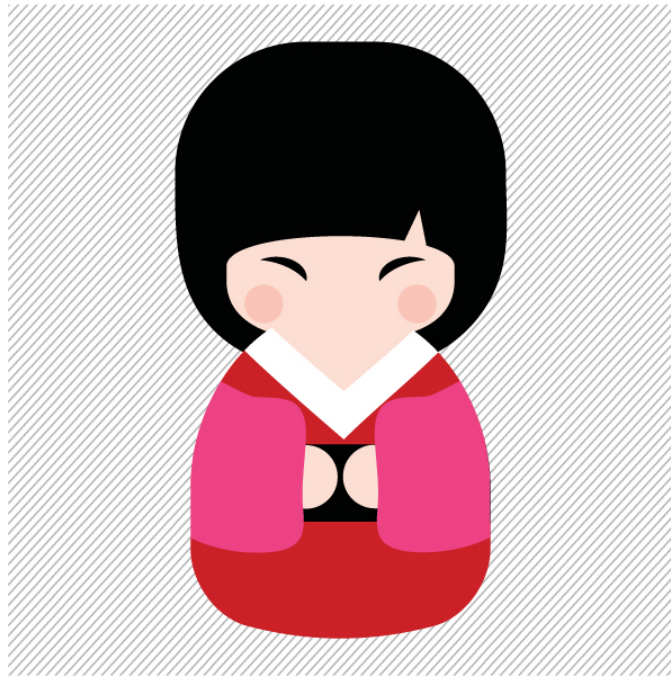
kyoto\_kuties-09



kyoto\_kuties-10



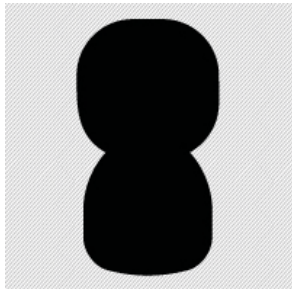
kyoto\_kuties-11



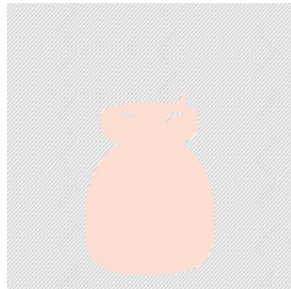
## kyoto\_kuties-01

Import Size: 4" at 72 DPI

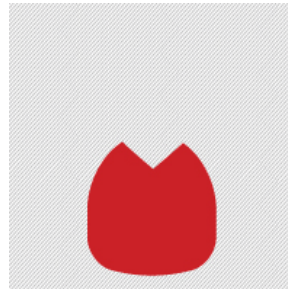
*\*striped boxes are for illustrative purposes only*



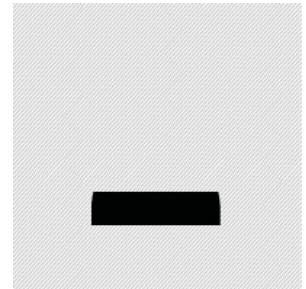
Layer-01



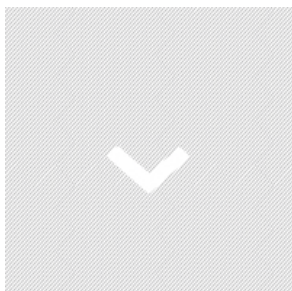
Layer-02



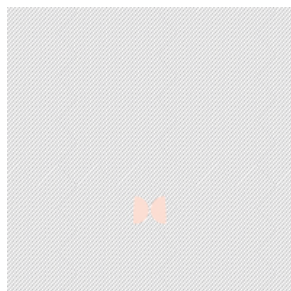
Layer-03



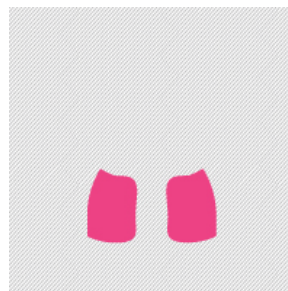
Layer-04



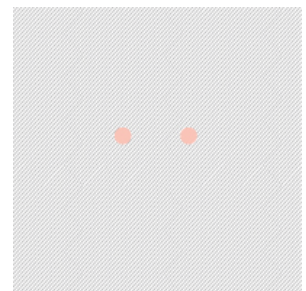
Layer-05



Layer-06



Layer-07



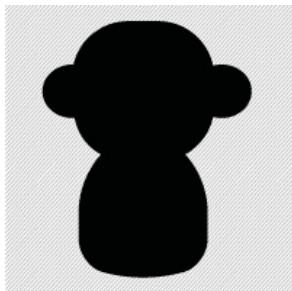
Layer-08



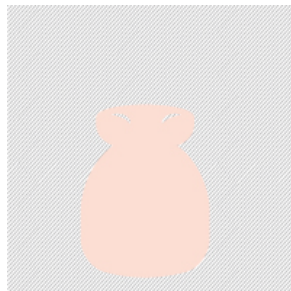
## kyoto\_kuties-02

Import Size: 4" at 72 DPI

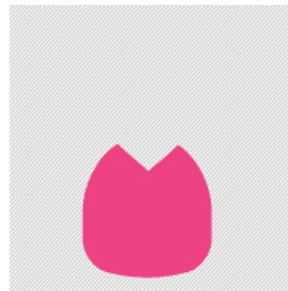
*\*striped boxes are for illustrative purposes only*



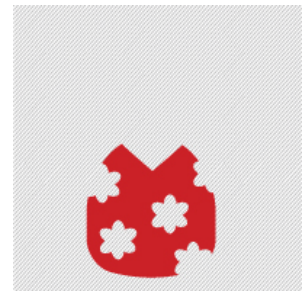
Layer-01



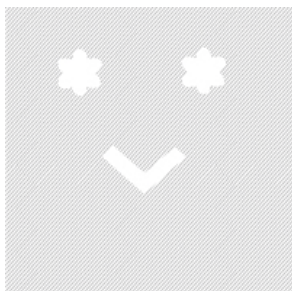
Layer-02



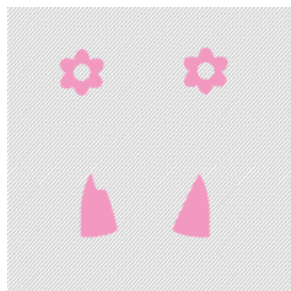
Layer-03



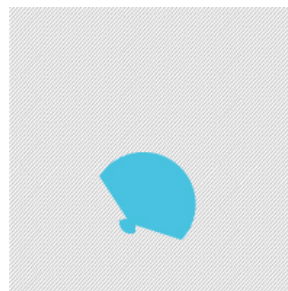
Layer-04



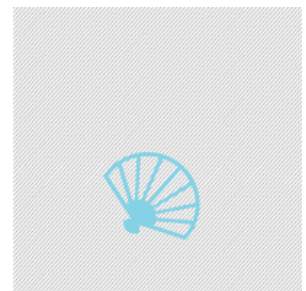
Layer-05



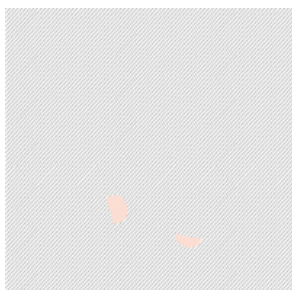
Layer-06



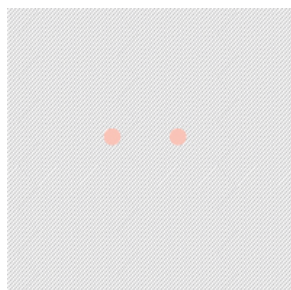
Layer-07



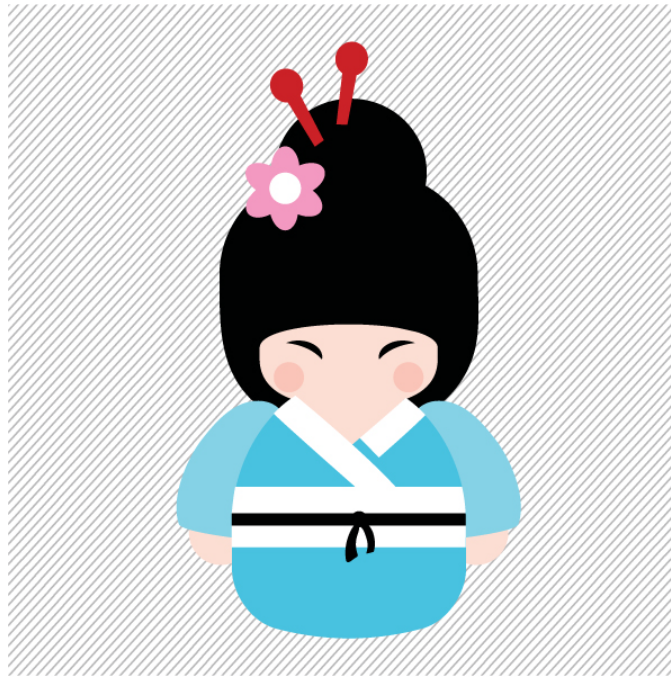
Layer-08



Layer-09



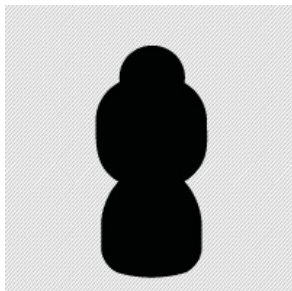
Layer-10



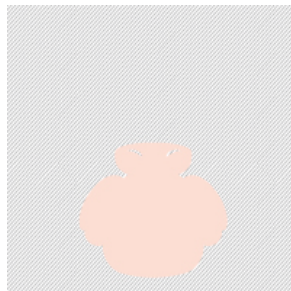
## kyoto\_kuties-03

Import Size: 4" at 72 DPI

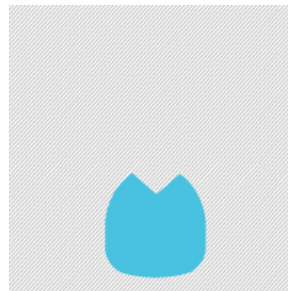
*\*striped boxes are for illustrative purposes only*



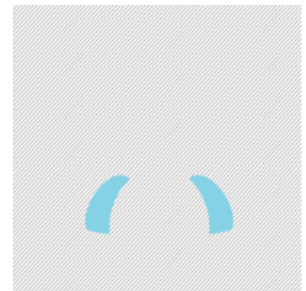
Layer-01



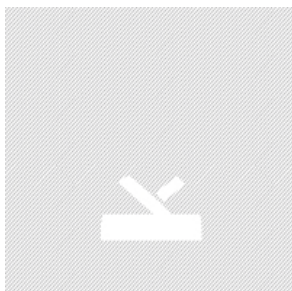
Layer-02



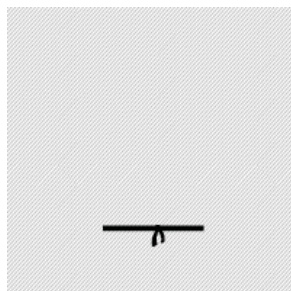
Layer-03



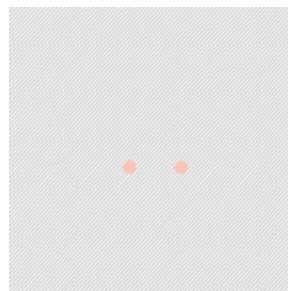
Layer-04



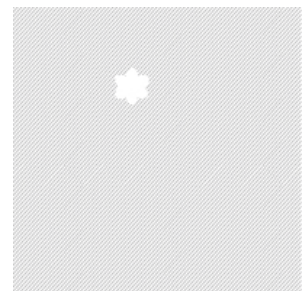
Layer-05



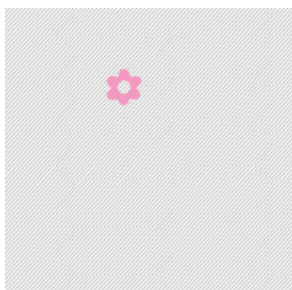
Layer-06



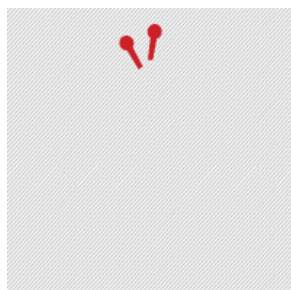
Layer-07



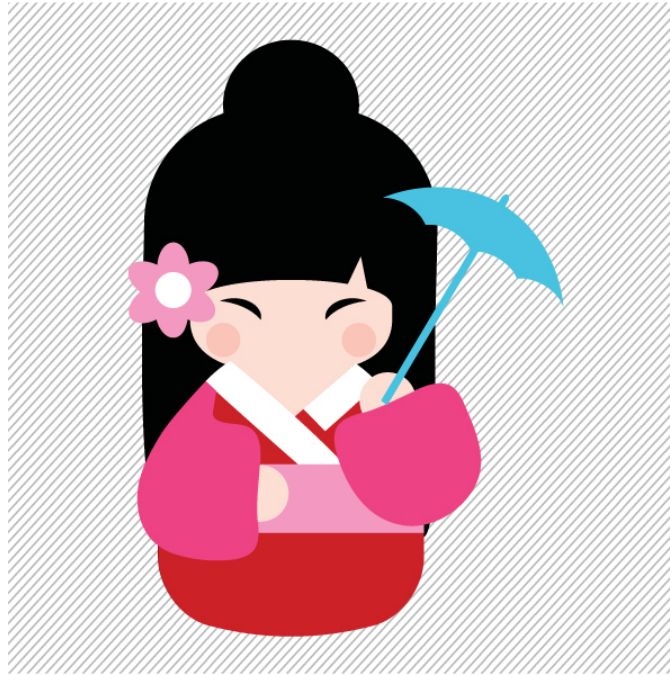
Layer-08



Layer-09



Layer-10



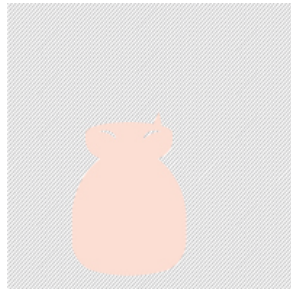
## kyoto\_kuties-04

Import Size: 4" at 72 DPI

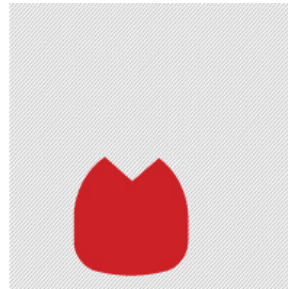
*\*striped boxes are for illustrative purposes only*



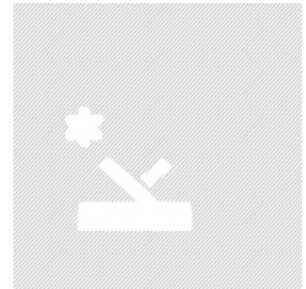
Layer-01



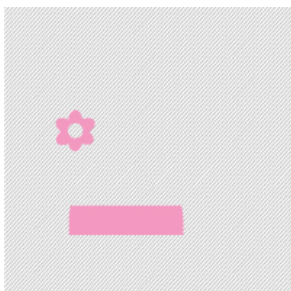
Layer-02



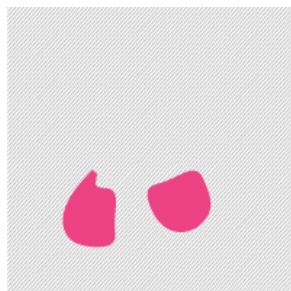
Layer-03



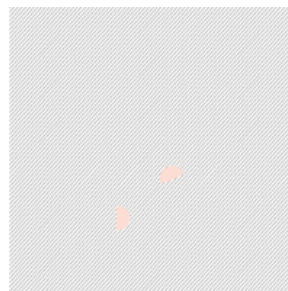
Layer-04



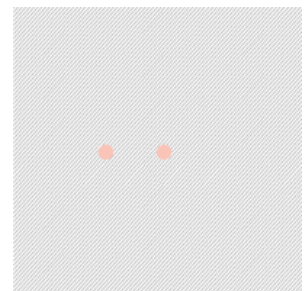
Layer-05



Layer-06



Layer-07



Layer-08



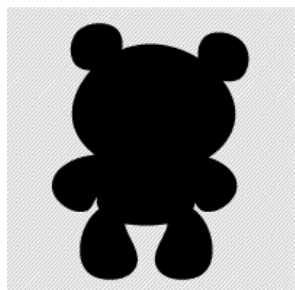
Layer-09



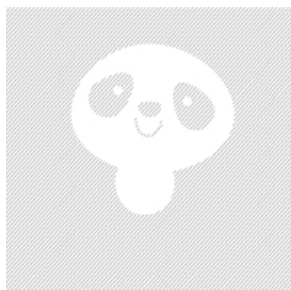
kyoto\_kuties-05

Import Size: 4" at 72 DPI

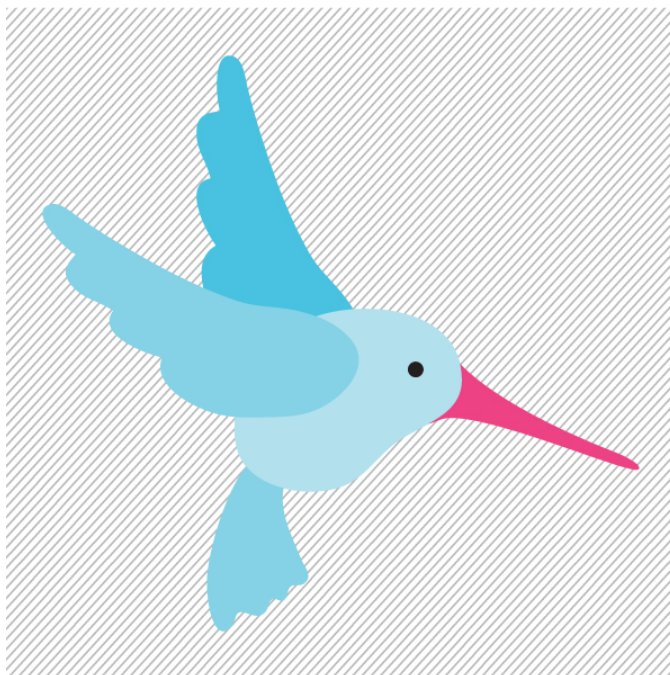
*\*striped boxes are for illustrative purposes only*



Layer-01



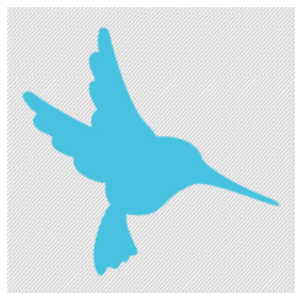
Layer-02



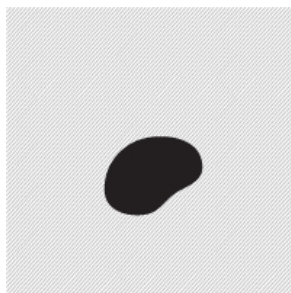
## kyoto\_kuties-06

Import Size: 4" at 72 DPI

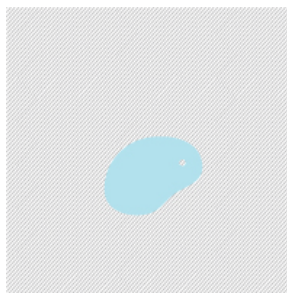
*\*striped boxes are for illustrative purposes only*



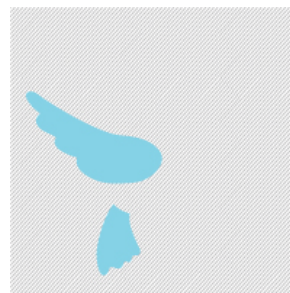
Layer-01



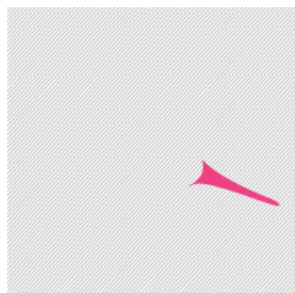
Layer-02



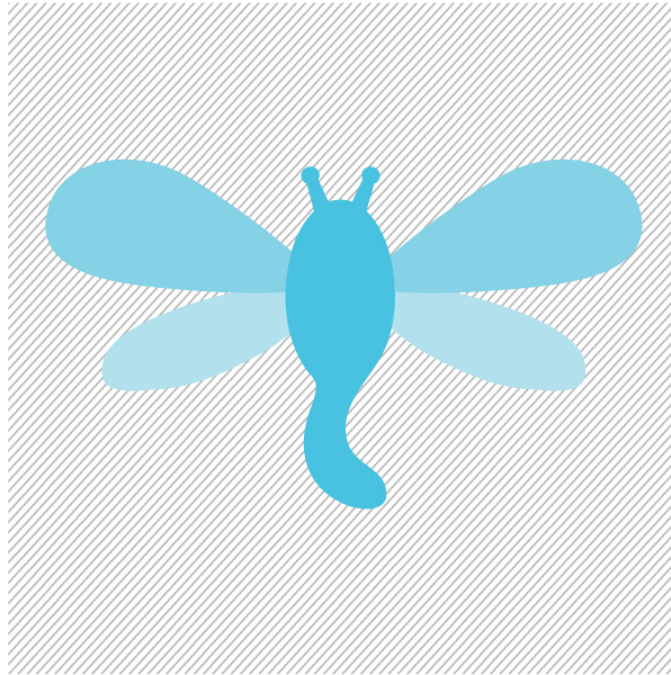
Layer-03



Layer-04



Layer-05



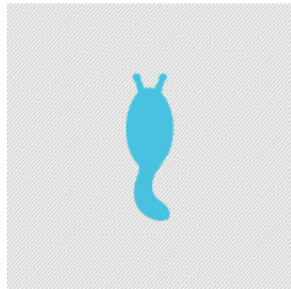
## kyoto\_kuties-07

Import Size: 4" at 72 DPI

*\*striped boxes are for illustrative purposes only*



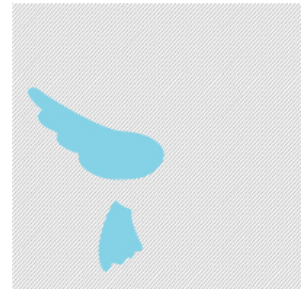
Layer-01



Layer-02



Layer-03



Layer-04



## kyoto\_kuties-08

Import Size: 4" at 72 DPI

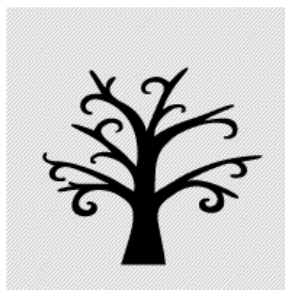
*\*striped boxes are for illustrative purposes only*



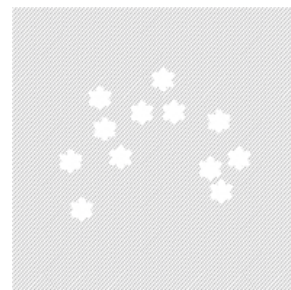
Layer-01



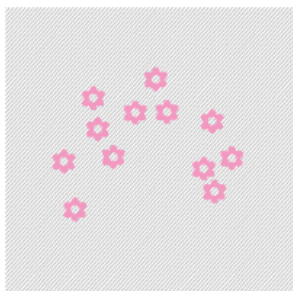
Layer-02



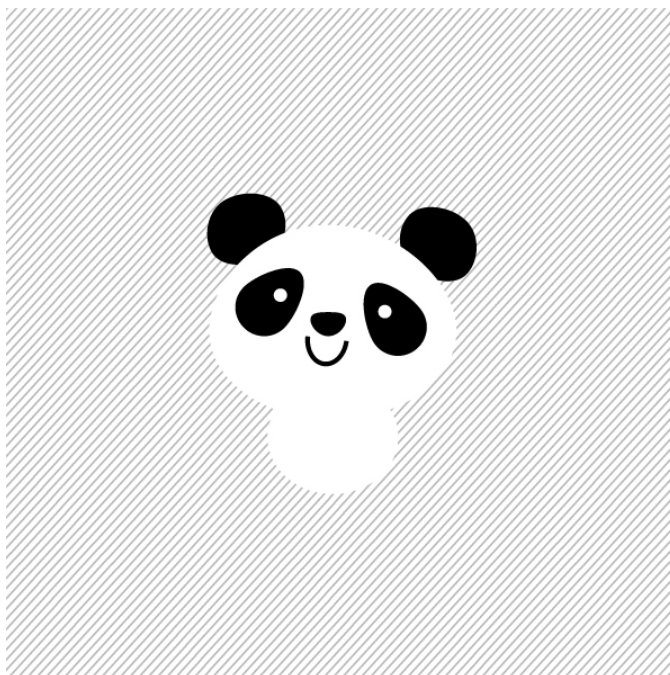
Layer-03



Layer-04



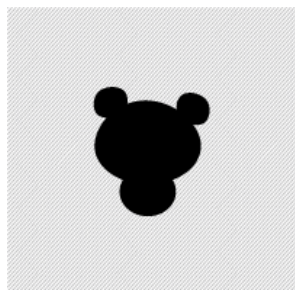
Layer-05



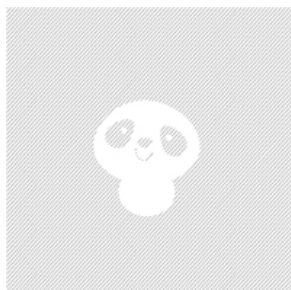
## kyoto\_kuties-10

Import Size: 4" at 72 DPI

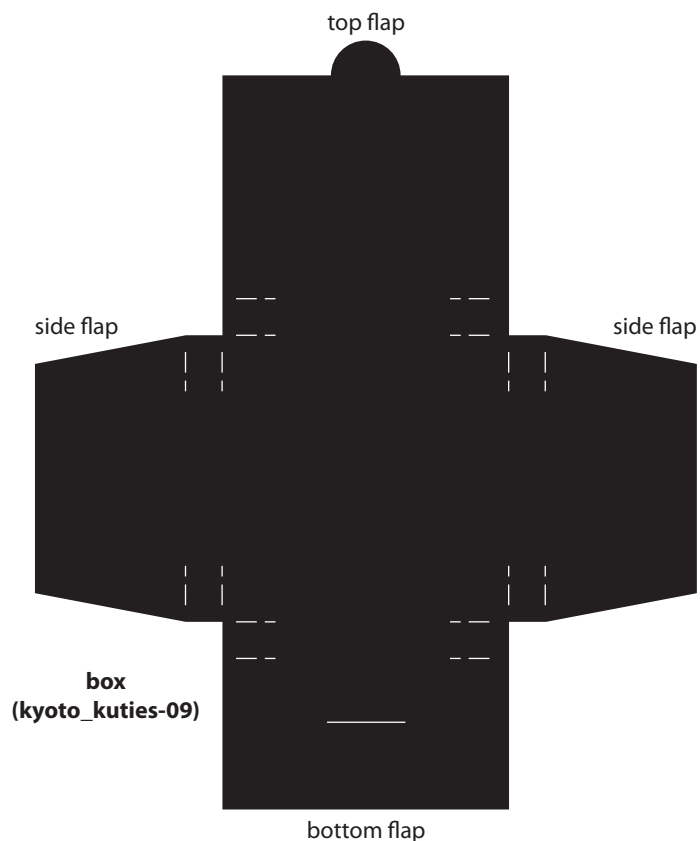
*\*striped boxes are for illustrative purposes only*



Layer-01



Layer-02



Legend

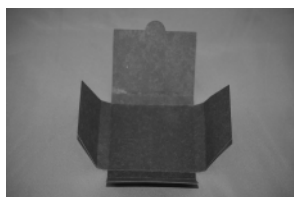
- - fold in  
- - fold out

*\*image above is a general representation and does not necessarily represent the color or shape of your file.*

## Instructions

*With the outside of the envelope facing down:*

1. Fold in all flaps on **box**
2. Adhere **box** side flaps together
3. Adhere **box** bottom flap to the top of **box** side flaps
4. Attach **back piece** to the back of **box**
5. Assemble **front piece**
6. Attach **front piece** to **box** top flap
7. Insert notepads as desired



1



3



4



5



6